

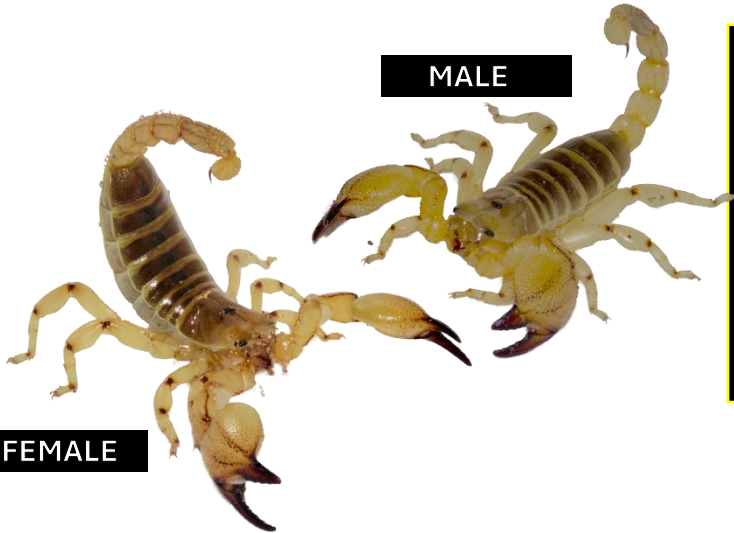
SEXUAL DIMORPHISM IN

SCORPIO PALMATUS



Scorpio palmatus present sexual dimorphism, this means that there are noticeable differences between the male and females of this species. In this particular case, there are 2 noticeable differences.

MALE



FEMALE

The female's carapace is far glossier than their male counterpart.

The carapace on the males always appears matt.

MALE



FEMALE



FIXED FINGER

MOVEABLE FINGER



Males of this species have a shorter fixed finger than the females.

The fixed finger of females is almost as long as their moveable finger.

The moveable finger is also longer in females compared to males.

