

HETEROMETRUS

ASIAN FOREST SCORPIONS



HETEROMETRUS LONGIMANUS



TELSON

H. LONGIMANUS HAVE WHITE TELSONS AS SCORPLINGS, ORANGE IN JUVENILES AND DARK RED AS MATURE ADULTS.

CHELA

THE CHELA OF H. LONGIMANUS ARE LONG AND SLENDER, WITH MALES BEING EXCEPTIONALLY ELONGATED.

HETEROMETRUS SPINIFER



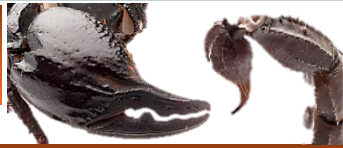
TELSON

H. SPINIFER HAVE WHITE TELSONS AS SCORPLINGS, ORANGE IN JUVENILES AND DARK RED AS MATURE

CHELA

H. SPINIFER ARE THE LARGEST OF THE HETEROMETRUS, THE CHELA ARE ESPECIALLY LARGE AND BULBUS SHAPED.

HETEROMETRUS SILENUS



TELSON

H. SILENUS HAVE DARK BROWN/BLACK TELSONS ALL THROUGHOUT THEIR LIFE.

CHELA

H. SILENUS ROUND SMOOTH CHELA, MALES HAVE A REDDISH HUE TO THEIR CHELA AND A PRONOUNCED TOOTH ON THE MOVEABLE FINGER.

HETEROMETRUS LAOTICUS



TELSON

H. LAOTICUS HAVE DARK BROWN/BLACK TELSONS THROUGHOUT THEIR LIFE.

CARAPACE

H. LAOTICUS HAVE A SMOOTH CARAPACE WITH NO GRANULATION, THEY ARE MATT BLACK.

HETEROMETRUS LAEVIGATUS



TELSON

H. LAEVIGATUS HAVE A DARK BROWN/BLACK TELSON UNLIKE THEIR LOOKALIKE, H. LONGIMANUS

CHELA/CARAPACE

SIMILAR TO H. LONGIMANUS, WITH THE MALES BEING ELONGATED. CARAPACE HAS A LARGE AMOUNT OF GRANULATION

JAVANIMETRUS CYANEUS



CHELA

J. CYANEUS PESENT A LARGE AMOUNT OF GRANULATION ALL OVER THEIR CHELA.

CARAPACE

J. CYANEUS HAVE GRANULATION THAT COVERS THE ENTIRETY OF THE CARAPACE, MORE SO THAN ANY OTHER HETEROMETRUS.