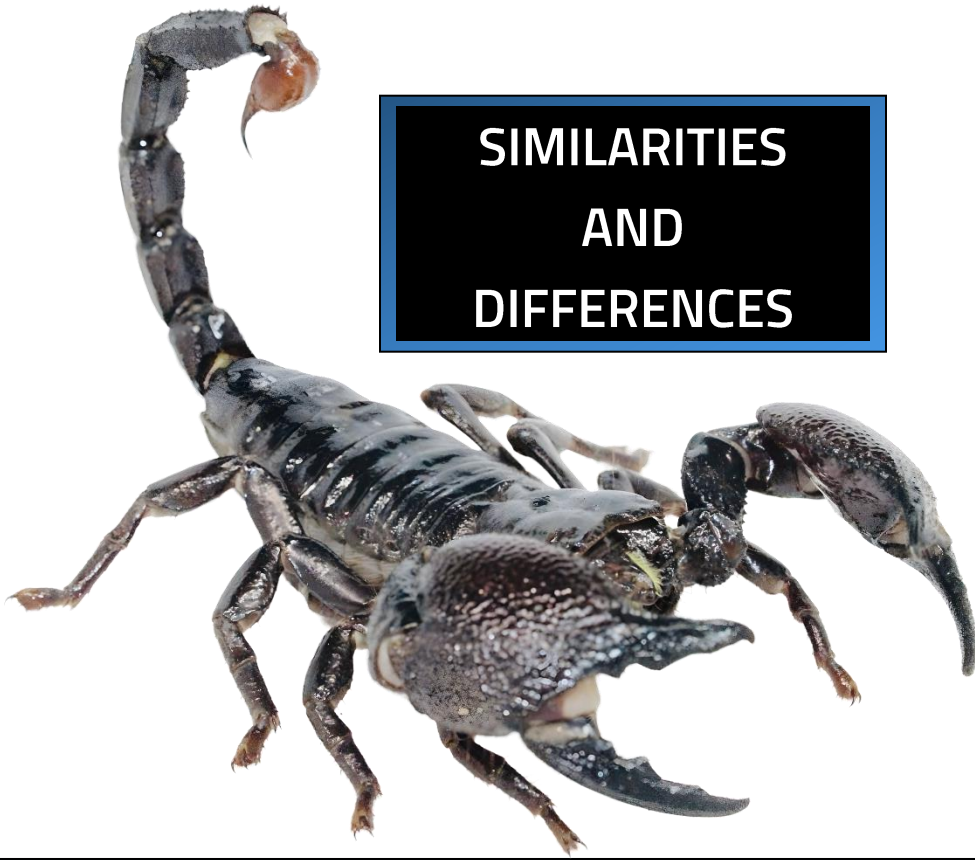


PANDINUS IMPERATOR



SIMILARITIES AND DIFFERENCES

Emperor scorpions are often confused with Heterometrus (Asian Forest) scorpions in the pet trade. The most common scorpions it is mistaken by are Heterometrus spinifer & Heterometrus silenus. Both these scorpions can share similarities with Emperor scorpions, but instead, let's look at the differences.

PANDINUS IMPERATOR

HETEROMETRUS SP

Size and Body Structure

- Typically reaches around 6–8 inches in length and has a relatively bulkier body with thicker claws.
- Similar in length but often leaner, with more slender claws compared to the emperor scorpion.

Claw Shape and Texture

- Has larger, more rounded claws with a slightly rough texture.
- Has slightly smaller, smoother claws that are narrower.

Colour

- Often has a matte or slightly glossy black color.
- Can appear darker or have a more pronounced shine to its exoskeleton.

Venom Potency

- Has relatively mild venom, relying more on its strong claws for defense.
- Venom is also mild compared to more dangerous scorpions, but it may be slightly more potent than that of the emperor scorpion.

Do I have an Emperor Scorpion?



Pandinus imperators, commonly known as Emperor scorpions, have been in the hobby a long time. Emperor scorpions are very large and rare scorpions, only sold in wholesale for literal pennies, are now worth hundreds. Here, I'm going to help you identify if you may have one, or if you were sold something else.



Scorpuling [Instar 1-2]

P. imperators at this stage will have a **White** telson, but too similar to Heterometrus sp to identify correctly. If buying at this stage, do so from reliable breeders only. This is by far the hardest to stage to verify.



Juvenile [Instar 3-5]

At this stage P. imperators are able to be identified correctly. Telsons colour will be **Yellow/Orange**, the round heavily granulated chela are more defined.



Adult [Instar 7-8]

Sexually mature and ready for breeding.
Adult P. imperators have **Red(ish)** telsons, their chela extremely large and bulbous with heavy granulation. Adult Emperors are often heavy as they are quite thick scorpions, compared to Heterometrus which are usually thinner.

Emperor scorpions are often confused with Heterometrus (Asian Forest) scorpions in the pet trade. The most common scorpions it is mistaken by are Heterometrus spinifer & Heterometrus silenus. Both these scorpions can share similarities with Emperor scorpions, but instead, let's look at the differences.



HETEROMETRUS SILENUS

The chela of H. silenus are very round but smaller than P. imperator and lack the granulation. The telson of H. silenus is always black from any age, therefore it cannot be mistaken for an Emperor who do not have black telsons at any stage in their life.



PANDINUS IMPERATOR

The chela of P. imperator are bulbous and large, often with a red hue covered in granulation which gives it a bumpy texture. The telson is white when born and gradually gets darker with age (Yellow>Orange>Red). Emperors are much thicker than the Heterometrus Genus.



HETEROMETRUS SPINIFER

The chela are elongated more than Emperors, and lack any granulation. H. spinifer do indeed share the same colour telson as P. imperators, which make this scorpion often mistaken as emperors by some reptile shops and hobbyists.